

CO #09

Item 14: *Additional 194 Calendar Days for
Utility Conflict Delays.*

November 19, 2024

HNTB CORPORATION
 1301 Fannin St. Suite 2000
 Houston, Texas 77002

Reference: Lake Houston Redevelopment Authority
 Northpark Drive Overpass Project (T-1013)
 COH WBS No.: N-T10000-001-3
 TxDOT CSJ: 0912-37-232

County: Montgomery
 Correspondence letter No.: 18.1

Subject: Time Impact Analysis No. 1 – Utility Conflict Delay

Attention: Mr. Steve Peik, PE
 Senior Construction Manager

Dear Sir:

We have enclosed Time Impact Analysis (TIA) No. 1 – Utility Conflict Delay on the above referenced project. Referencing Correspondence letter #11 HBC demobilized off critical path activities on September 18th, 2023, due to numerous utilities conflicts, mainly CenterPoint Gas in the center median. The CenterPoint conflict was given an original estimated completion date of December 2, 2023, that eventually pushed out to March 30, 2024. Centerpoint completed the blow-off of their old lines on March 20th, 2024. Once confirmed HBC began to re-mobilize a large storm sewer crew to resume work on the 8’x6’ RCB in the center median. Work resumed on April 3rd, when it was discovered two previously unmarked lines were in conflict with the 8’x6’ RCB. Critical locates were performed to uncover these utility lines for confirmation that they were inactive. The last active line to be moved was Brightspeed Communication at Sta 72+05 that was re-routed and spliced on April 10th, 2024. The Time Impact Analysis compares dates between the baseline schedule and Pre-Impact Schedule, the Pre-Impact schedule and the Post-Impact schedule, and the baseline schedule and the Post-Impact schedule. The TIA compares the following Schedule Activities:

	Data Date
Baseline	7/10/2023
Pre-Impact	9/18/2023
Post Impact	4/11/2024
Baseline Project Complete	1/30/2026
Pre-Impact Project Complete	4/29/2026
Baseline to Pre-Impact Delta(Cal. Days)	88
Pre-Impact Project Complete	4/29/2026
Post-Impact Project Complete	8/13/2026
Pre-Impact to Post-Impact Delta(Cal. Days)	106
Baseline Project Complete	1/30/2026
Post-Impact Project Complete	8/13/2026
Baseline to Post-Impact Delta(Cal. Days)	194



HBC is formally requesting one hundred ninety-four (194) contract days, the delta between the Baseline and Post-Impact Schedule Update completion dates, resulting from the Centerpoint Gas utility conflict delay and the subsequent Brightspeed utility conflict. Should you have questions or need additional information please let me know. Your review and consideration are greatly appreciated.

Sincerely,

Josh Laney
Project Manager
Harper Brothers Construction

Attachments:

2215-Pre_Impact TIA(Final)
2215-Post_Impact TIA(Final)
NorthPark (Baseline to Post-Impact) Longest Path
NorthPark (Baseline to Pre-Impact) Longest Path
NorthPark (Pre-Impact to Post-Impact) Longest Path
Northpark Drive Overpass Project Utility Conflict Log -TIA
11 - Demobilization From Critical Path Work 2023.09.18 - Package

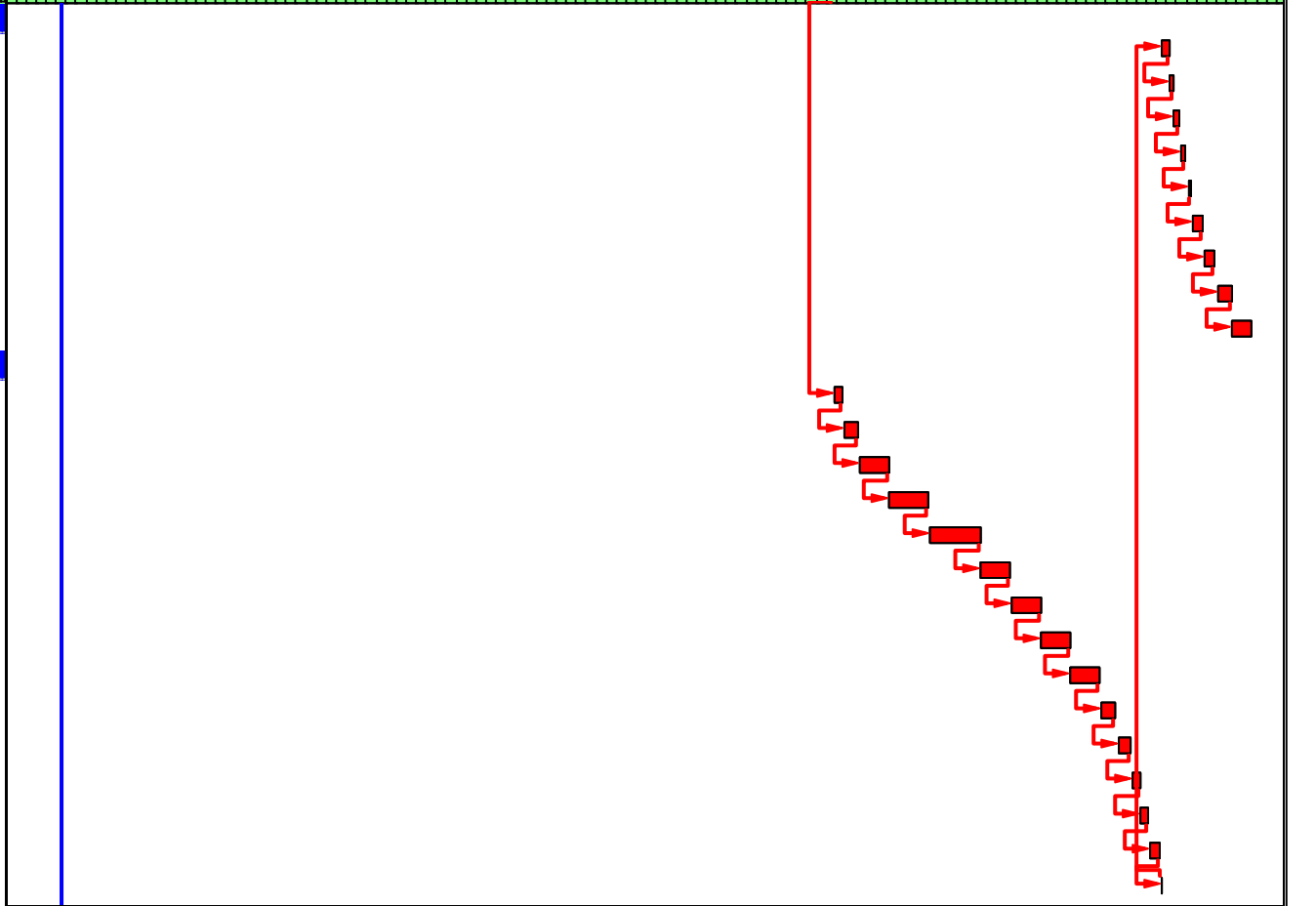
Activity ID	Activity Name	Original Duration	Actual Duration	Remaining Duration	Start	Finish	2024												2025												2026										
							O	N	D	J	F	M	A	M	J	J	A	S	O	N	D	J	F	M	A	M	J	J	A	S	O	N	D	J	F	M	A				
Lake Houston Redevelopment - North Park DR (T-1013) - Pre Impact							732	50	682	10-Jul-23 A	29-Apr-26																														
Overview - General Items							15	0	15	08-Apr-26	29-Apr-26																														
2767-10	Final PVMT Markings - Northpark	15	0	15	08-Apr-26	28-Apr-26																																			
PC	Project Complete (937 calendar days)(11.01.25)	0	0	0		29-Apr-26																																			
Utility Relocations (Known at Bid Time)							120	70	76	10-Jul-23 A	02-Dec-23																														
UTL-60	Centerpoint Gas Sta. 17+74 to 77+00	120	70	76	10-Jul-23 A	02-Dec-23																																			
Utility Relocations (Discovery)							94	25	43	08-Aug-23 A	01-Dec-23																														
UC-19	Centerpoint Gas - Sta 72+81 - Storm Drainage 8x6	60	25	43	08-Aug-23 A	01-Dec-23																																			
UC-22	Centerpoint Gas - Sta 45+72 - Storm Drainage 6x5	60	18	43	18-Aug-23 A	01-Dec-23																																			
UC-24	Centerpoint Gas - Sta 48+11 - Storm Drainage 6x5	60	18	43	18-Aug-23 A	01-Dec-23																																			
UC-25	Centerpoint Gas - Sta 48+08 - Storm Drainage 6x5	60	18	43	18-Aug-23 A	01-Dec-23																																			
UC-26	Centerpoint Gas - Sta 51+18 - Storm Drainage 6x5	60	18	43	18-Aug-23 A	01-Dec-23																																			
UC-27	Centerpoint Gas - Sta 53+59 - Storm Drainage 6x5	60	18	43	18-Aug-23 A	01-Dec-23																																			
UC-29	Centerpoint Gas - Sta 63+71 - Storm Drainage 6x5	60	18	43	18-Aug-23 A	01-Dec-23																																			
UC-31	Centerpoint Gas - Sta 70+12 - Storm Drainage	55	18	43	18-Aug-23 A	01-Dec-23																																			
UC-43	Centerpoint Gas - 2' Gasline Sta 39+50 - 24" RCP Lateral	60	4	43	11-Sep-23 A	01-Dec-23																																			
UC-47	Centerpoint Gas - Sta 36+75 - 24" RCP Lateral	60	4	43	11-Sep-23 A	01-Dec-23																																			
Phase 1							203	0	203	04-Dec-23	02-Dec-24																														
Phase 1 Step 1 Northpark median RCB (east of RR) Plan Sht 56 - 61							28	0	28	04-Dec-23	01-Feb-24																														
11-462-10F	8' x 6' RCB Sta. 72+82 to 72+04 (78 LF)	1	0	1	04-Dec-23	04-Dec-23																																			
11-462-10G	8' x 6' RCB Sta. 72+04 to 70+12 (192 LF)	2	0	2	05-Dec-23	06-Dec-23																																			
11-462-10H	8' x 6' RCB Sta. 70+12 to 69+03 (109 LF)	1	0	1	08-Dec-23	08-Dec-23																																			
11-462-20	6' x 5' RCB Sta. 41+60/55+83 (1,423 LF)	15	0	15	11-Dec-23	15-Jan-24																																			
11-464-30	Laterals Sta. 41+60/69+03 (18 EA)	9	0	9	17-Jan-24	01-Feb-24																																			
Phase 1 Step 2 Northpark median paving (east of RR) Plan Sht 62 - 68							55	0	55	05-Feb-24	09-May-24																														
12-502-10	TCP - Phase 1 Step 2	5	0	5	05-Feb-24	12-Feb-24																																			
12-110-10	Excavate RDWY Sta.41+60/Sta.78+50 (RT)	5	0	5	13-Feb-24	20-Feb-24																																			
12-260-10	Lime S/G Sta.41+60/Sta.78+50 (RT)(10,660 SY)	9	0	9	22-Feb-24	07-Mar-24																																			
12-276-10	6" CSB Sta.41+60/Sta.78+50 (RT)(10,660 SY)	6	0	6	08-Mar-24	18-Mar-24																																			
12-292-10	Bond Breaker Sta.41+60/Sta.78+50 (RT)(590 TNs)	1	0	1	20-Mar-24	20-Mar-24																																			
12-360-10	Pour 1 (18') - EB 12" CRCP Sta.41+60/Sta.78+50 (RT)(8,380 SY)	12	0	12	21-Mar-24	10-Apr-24																																			
12-360-20	LT TN Lanes (2 EA) - EB 12" CRCP Sta.41+60/Sta.78+50 (RT)	3	0	3	11-Apr-24	15-Apr-24																																			
12-508-20	ASB Detour Sta.40+36/Sta 78+50 (C)(5,900 SY)	10	0	10	16-Apr-24	01-May-24																																			
12-292-20	ASB Permanent Transition Sta 78+50/83+43 (C)	4	0	4	03-May-24	09-May-24																																			
Phase 1 Step 3 Northpark EB Lanes (east of RR) Plan Sht 69 - 74							120	0	120	10-May-24	02-Dec-24																														
13-502-10	TCP - Phs 1 Step 3 (move EB to center) plan sht 69	5	0	5	10-May-24	17-May-24																																			
13-104-10	REM Conc PVMT Sta. 29+75/78+50 (RT)(13,545 SY)	15	0	15	20-May-24	12-Jun-24																																			
13-464-10	Extend 42" Lateral W/30" RCP 29+82/30+75 (RT)(120 LF) Plan sht 317	3	0	3	24-May-24	29-May-24																																			
13-464-20	Extend 30" Lateral W/30" RCP 31+85/32+99 (RT)(135 LF) Plan sht 317	3	0	3	30-May-24	03-Jun-24																																			
13-464-30	Extend 36" Lateral W/30" RCP 33+77/35+28 (RT)(175 LF) Plan sht 319	3	0	3	04-Jun-24	07-Jun-24																																			
13-464-40	Extend 30" Lateral W/24" RCP 39+78/38+28 (RT)(175 LF) Plan sht 319	3	0	3	10-Jun-24	12-Jun-24																																			
13-464-50	Extend 36" Lateral W/36" RCP 42+81/41+21 (RT)(185 LF) Plan sht 319	3	0	3	13-Jun-24	17-Jun-24																																			
13-464-60	Extend 24" Lateral W/24" RCP 46+44/45+03 (RT)(1165 LF) Plan sht 320	3	0	3	19-Jun-24	21-Jun-24																																			
13-464-90	Extend 24" Lateral W/24" RCP 49+12/48+12 (RT)(125 LF) Plan sht 320	2	0	2	24-Jun-24	25-Jun-24																																			
13-464-100	Extend 36" Lateral W/24"/30" RCP 50+62/53+07 (RT)(270 LF) Plan sht 320	4	0	4	26-Jun-24	02-Jul-24																																			
13-464-110	Extend 24" Lateral Sta. 54+47 (RT)(25 LF) Plan sht 321	1	0	1	03-Jul-24	03-Jul-24																																			
13-464-120	Extend 30" Lateral W/24" RCP 56+57/58+97 (RT)(265 LF) Plan sht 321	3	0	3	08-Jul-24	10-Jul-24																																			
13-464-130	Extend 24" Lateral W/24" RCP 60+47/61+97 (RT)(175 LF) Plan sht 321	2	0	2	11-Jul-24	12-Jul-24																																			

Finish Date = 29-Apr-26

Activity UTL-60 driving critical path activity 11-462-10F

█ Longest Path
 █ Actual Work
 █ Critical Remaining Work
█ Float Path
 █ Remaining Work
 ◆ Milestone

Activity ID	Activity Name	Original Duration	Actual Duration	Remaining Duration	Start	Finish	2024												2025												2026																
							M	A	M	J	J	A	S	O	N	D	J	F	M	A	M	J	July	A	S	O	N	D	J	F	M	A	M	J	July	A											
Northpark Roadway							45	0	45	21-May-26	22-Jul-26																																				
32-360-70	Pour 1 - EB 12" CRCP Sta.33+92/Sta. 38+60 (RT)	3	0	3	21-May-26	25-May-26																																									
32-360-80	Pour 1 - WB 12" CRCP Sta.33+92/Sta. 38+60 (LT)	3	0	3	26-May-26	28-May-26																																									
32-360-90	Pour 2 - EB 12" CRCP Sta.33+92/Sta. 38+60 (RT)	3	0	3	29-May-26	02-Jun-26																																									
32-360-100	Pour 2 - WB 12" CRCP Sta.33+92/Sta. 38+60 (LT)	3	0	3	03-Jun-26	05-Jun-26																																									
32-360-110	Pour 3 - EB 12" CRCP Sta.33+92/Sta. 38+60 (RT)	3	0	3	08-Jun-26	10-Jun-26																																									
32-450-10	36" SSTR Sta. 22+00/36+35 (RT)(1,435 LF) Sht 221, 224	6	0	6	11-Jun-26	18-Jun-26																																									
32-450-20	36" SSTR Sta. 21+61/36+85 (LT)(1,524 LF) Sht 221, 224	6	0	6	19-Jun-26	26-Jun-26																																									
32-514-10	42" SSCB Sta. 19+09/39+63 (C)(2,054 LF) Sht 221, 224	8	0	8	29-Jun-26	08-Jul-26																																									
32-6198-10	Install Street Lights (RE Wall/BRDG)(18 EA) Plan Sht 523, 524	10	0	10	09-Jul-26	22-Jul-26																																									
Northpark Bridge							144	0	144	03-Oct-25	20-May-26																																				
32-416-10	36" Drill Shafts (11 EA) - ABUT #1	4	0	4	03-Oct-25	08-Oct-25																																									
32-416-20	Bent #2 - 72" Drill Shafts (3 EA)	6	0	6	10-Oct-25	20-Oct-25																																									
32-420-20	Bent #2 - Form/Pour Flared Column (3 EA)	13	0	13	21-Oct-25	10-Nov-25																																									
32-420-25	Bent #2 - Form/Pour Inverted "T" Cap	15	0	15	11-Nov-25	08-Dec-25																																									
32-420-35	Bent #3 - Form/Pour Inverted "T" Cap	15	0	15	09-Dec-25	13-Jan-26																																									
32-420-45	Bent #4 - Form/Pour Inverted "T" Cap	15	0	15	14-Jan-26	03-Feb-26																																									
32-420-55	Bent #5 - Form/Pour Inverted "T" Cap	15	0	15	04-Feb-26	24-Feb-26																																									
32-420-65	Bent #6 - Form/Pour Inverted "T" Cap	15	0	15	25-Feb-26	17-Mar-26																																									
32-420-75	Bent #7 - Form/Pour Inverted "T" Cap	15	0	15	18-Mar-26	07-Apr-26																																									
32-425-20	Set Tx54 Beams Span 4, 5, and 6 (33 EA)	8	0	8	08-Apr-26	17-Apr-26																																									
32-422-20	Set Deck Panels Span 4, 5, and 6	8	0	8	20-Apr-26	29-Apr-26																																									
32-422-30	Unit 3 - Set Deck Panels Span 7, and 8	4	0	4	30-Apr-26	05-May-26																																									
32-422-31	Form OVHG Span 7, and 8	4	0	4	06-May-26	11-May-26																																									
32-422-32	Unit 3 - Make Ready BRDG Deck	6	0	6	12-May-26	19-May-26																																									
32-422-33	Unit #3 - Pour BRDG Deck	1	0	1	20-May-26	20-May-26																																									



1	Charged Day
	Non-Charge Day
	Estimate Cut Off Date
	Calculated Contract Expiration Date
	Schedule Finish Date

2023

Houston Northpark
 PN: N-T10000-0001-3
 Baseline
 Period End Date: 0000

Jan-23						
S	M	T	W	R	F	S
1	2	3	4	5	6	7
8	9	10	11	12	13	14
15	16	17	18	19	20	21
22	23	24	25	26	27	28
29	30	31				

Feb-23						
S	M	T	W	R	F	S
			1	2	3	4
5	6	7	8	9	10	11
12	13	14	15	16	17	18
19	20	21	22	23	24	25
26	27	28				

Mar-23						
S	M	T	W	R	F	S
			1	2	3	4
5	6	7	8	9	10	11
12	13	14	15	16	17	18
19	20	21	22	23	24	25
26	27	28	29	30	31	

Apr-23						
S	M	T	W	R	F	S
						1
2	3	4	5	6	7	8
9	10	11	12	13	14	15
16	17	18	19	20	21	22
23	24	25	26	27	28	29
30						

May-23						
S	M	T	W	R	F	S
	1	2	3	4	5	6
7	8	9	10	11	12	13
14	15	16	17	18	19	20
21	22	23	24	25	26	27
28	29	30	31			

Jun-23						
S	M	T	W	R	F	S
				1	2	3
4	5	6	7	8	9	10
11	12	13	14	15	16	17
18	19	20	21	22	23	24
25	26	27	28	29	30	

Jul-23						
S	M	T	W	R	F	S
						1
2	3	4	5	6	7	8
9	10	11	12	13	14	15
16	17	18	19	20	21	22
23	24	25	26	27	28	29
30	31					

Aug-23						
S	M	T	W	R	F	S
		1	2	3	4	5
6	7	8	9	10	11	12
13	14	15	16	17	18	19
20	21	22	23	24	25	26
27	28	29	30	31		

Sep-23						
S	M	T	W	R	F	S
					1	2
3	4	5	6	7	8	9
10	11	12	13	14	15	16
17	18	19	20	21	22	23
24	25	26	27	28	29	30

Oct-23						
S	M	T	W	R	F	S
1	2	3	4	5	6	7
8	9	10	11	12	13	14
15	16	17	18	19	20	21
22	23	24	25	26	27	28
29	30	31				

Nov-23						
S	M	T	W	R	F	S
			1	2	3	4
5	6	7	8	9	10	11
12	13	14	15	16	17	18
19	20	21	22	23	24	25
26	27	28	29	30		

Dec-23						
S	M	T	W	R	F	S
					1	2
3	4	5	6	7	8	9
10	11	12	13	14	15	16
17	18	19	20	21	22	23
24	25	26	27	28	29	30
31						

1	Charged Day
	Non-Charge Day
	Estimate Cut Off Date
	Calculated Contract Expiration Date
	Schedule Finish Date

2024

Houston Northpark
 PN: N-T10000-0001-3
 Baseline
 Period End Date: 0000

Jan-24						
S	M	T	W	R	F	S
	175	176	177	178	179	180
181	182	183	184	185	186	187
188	189	190	191	192	193	194
195	196	197	198	199	200	201
202	203	204	205			

Feb-24						
S	M	T	W	R	F	S
				206	207	208
209	210	211	212	213	214	215
216	217	218	219	220	221	222
223	224	225	226	227	228	229
230	231	232	233	234		

Mar-24						
S	M	T	W	R	F	S
					235	236
237	238	239	240	241	242	243
244	245	246	247	248	249	250
251	252	253	254	255	256	257
258	259	260	261	262	263	264
265						

Apr-24						
S	M	T	W	R	F	S
	266	267	268	269	270	271
272	273	274	275	276	277	278
279	280	281	282	283	284	285
286	287	288	289	290	291	292
293	294	295				

May-24						
S	M	T	W	R	F	S
			296	297	298	299
300	301	302	303	304	305	306
307	308	309	310	311	312	313
314	315	316	317	318	319	320
321	322	323	324	325	326	

Jun-24						
S	M	T	W	R	F	S
						327
328	329	330	331	332	333	334
335	336	337	338	339	340	341
342	343	344	345	346	347	348
349	350	351	352	353	354	355
356						

Jul-24						
S	M	T	W	R	F	S
	357	358	359	360	361	362
363	364	365	366	367	368	369
370	371	372	373	374	375	376
377	378	379	380	381	382	383
384	385	386	387			

Aug-24						
S	M	T	W	R	F	S
				388	389	390
391	392	393	394	395	396	397
398	399	400	401	402	403	404
405	406	407	408	409	410	411
412	413	414	415	416	417	418

Sep-24						
S	M	T	W	R	F	S
419	420	421	422	423	424	425
426	427	428	429	430	431	432
433	434	435	436	437	438	439
440	441	442	443	444	445	446
447	448					

Oct-24						
S	M	T	W	R	F	S
		449	450	451	452	453
454	455	456	457	458	459	460
461	462	463	464	465	466	467
468	469	470	471	472	473	474
475	476	477	478	479		

Nov-24						
S	M	T	W	R	F	S
					480	481
482	483	484	485	486	487	488
489	490	491	492	493	494	495
496	497	498	499	500	501	502
503	504	505	506	507	508	509

Dec-24						
S	M	T	W	R	F	S
510	511	512	513	514	515	516
517	518	519	520	521	522	523
524	525	526	527	528	529	530
531	532	533	534	535	536	537
538	539	540				

1	Charged Day
	Non-Charge Day
	Estimate Cut Off Date
	Calculated Contract Expiration Date
	Schedule Finish Date

2025

Houston Northpark
 PN: N-T10000-0001-3
 Baseline
 Period End Date: 0000

Jan-25						
S	M	T	W	R	F	S
			1	2	3	4
			541	542	543	544
5	6	7	8	9	10	11
545	546	547	548	549	550	551
12	13	14	15	16	17	18
552	553	554	555	556	557	558
19	20	21	22	23	24	25
559	560	561	562	563	564	565
26	27	28	29	30	31	
566	567	568	569	570	571	

Feb-25						
S	M	T	W	R	F	S
						1
						572
2	3	4	5	6	7	8
573	574	575	576	577	578	579
9	10	11	12	13	14	15
580	581	582	583	584	585	586
16	17	18	19	20	21	22
587	588	589	590	591	592	593
23	24	25	26	27	28	
594	595	596	597	598	599	

Mar-25						
S	M	T	W	R	F	S
						1
						600
2	3	4	5	6	7	8
601	602	603	604	605	606	607
9	10	11	12	13	14	15
608	609	610	611	612	613	614
16	17	18	19	20	21	22
615	616	617	618	619	620	621
23	24	25	26	27	28	29
622	623	624	625	626	627	628
30	31					
629	630					

Apr-25						
S	M	T	W	R	F	S
		1	2	3	4	5
		631	632	633	634	635
6	7	8	9	10	11	12
636	637	638	639	640	641	642
13	14	15	16	17	18	19
643	644	645	646	647	648	649
20	21	22	23	24	25	26
650	651	652	653	654	655	656
27	28	29	30			
657	658	659	660			

May-25						
S	M	T	W	R	F	S
				1	2	3
				661	662	663
4	5	6	7	8	9	10
664	665	666	667	668	669	670
11	12	13	14	15	16	17
671	672	673	674	675	676	677
18	19	20	21	22	23	24
678	679	680	681	682	683	684
25	26	27	28	29	30	31
685	686	687	688	689	690	691

Jun-25						
S	M	T	W	R	F	S
1	2	3	4	5	6	7
692	693	694	695	696	697	698
8	9	10	11	12	13	14
699	700	701	702	703	704	705
15	16	17	18	19	20	21
706	707	708	709	710	711	712
22	23	24	25	26	27	28
713	714	715	716	717	718	719
29	30					
720	721					

Jul-25						
S	M	T	W	R	F	S
		1	2	3	4	5
		722	723	724	725	726
6	7	8	9	10	11	12
727	728	729	730	731	732	733
13	14	15	16	17	18	19
734	735	736	737	738	739	740
20	21	22	23	24	25	26
741	742	743	744	745	746	747
27	28	29	30	31		
748	749	750	751	752		

Aug-25						
S	M	T	W	R	F	S
					1	2
					753	754
3	4	5	6	7	8	9
755	756	757	758	759	760	761
10	11	12	13	14	15	16
762	763	764	765	766	767	768
17	18	19	20	21	22	23
769	770	771	772	773	774	775
24	25	26	27	28	29	30
776	777	778	779	780	781	782
31						
783						

Sep-25						
S	M	T	W	R	F	S
	1	2	3	4	5	6
	784	785	786	787	788	789
7	8	9	10	11	12	13
790	791	792	793	794	795	796
14	15	16	17	18	19	20
797	798	799	800	801	802	803
21	22	23	24	25	26	27
804	805	806	807	808	809	810
28	29	30				
811	812	813				

Oct-25						
S	M	T	W	R	F	S
			1	2	3	4
			814	815	816	817
5	6	7	8	9	10	11
818	819	820	821	822	823	824
12	13	14	15	16	17	18
825	826	827	828	829	830	831
19	20	21	22	23	24	25
832	833	834	835	836	837	838
26	27	28	29	30	31	
839	840	841	842	843	844	

Nov-25						
S	M	T	W	R	F	S
						1
						845
2	3	4	5	6	7	8
846	847	848	849	850	851	852
9	10	11	12	13	14	15
853	854	855	856	857	858	859
16	17	18	19	20	21	22
860	861	862	863	864	865	866
23	24	25	26	27	28	29
867	868	869	870	871	872	873
30						
874						

Dec-25						
S	M	T	W	R	F	S
	1	2	3	4	5	6
	875	876	877	878	879	880
7	8	9	10	11	12	13
881	882	883	884	885	886	887
14	15	16	17	18	19	20
888	889	890	891	892	893	894
21	22	23	24	25	26	27
895	896	897	898	899	900	901
28	29	30	31			
902	903	904	905			

1	Charged Day
	Non-Charge Day
	Estimate Cut Off Date
	Calculated Contract Expiration Date
	Schedule Finish Date

2026

Houston Northpark
 PN: N-T10000-0001-3
 Baseline
 Period End Date: 0000

Jan-26						
S	M	T	W	R	F	S
				906	907	908
4	5	6	7	8	9	10
909	910	911	912	913	914	915
11	12	13	14	15	16	17
916	917	918	919	920	921	922
18	19	20	21	22	23	24
923	924	925	926	927	928	929
25	26	27	28	29	30	31
930	931	932	933	934	935	936

Feb-26						
S	M	T	W	R	F	S
937	938	939	940	941	942	943
8	9	10	11	12	13	14
944	945	946	947	948	949	950
15	16	17	18	19	20	21
951	952	953	954	955	956	957
22	23	24	25	26	27	28
958	959	960	961	962	963	964

Mar-26						
S	M	T	W	R	F	S
965	966	967	968	969	970	971
8	9	10	11	12	13	14
972	973	974	975	976	977	978
15	16	17	18	19	20	21
979	980	981	982	983	984	985
22	23	24	25	26	27	28
986	987	988	989	990	991	992
29	30	31				
993	994	995				

Apr-26						
S	M	T	W	R	F	S
			996	997	998	999
5	6	7	8	9	10	11
1000	1001	1002	1003	1004	1005	1006
12	13	14	15	16	17	18
1007	1008	1009	1010	1011	1012	1013
19	20	21	22	23	24	25
1014	1015	1016	1017	1018	1019	1020
26	27	28	29	30		
1021	1022	1023	1024	1025		

May-26						
S	M	T	W	R	F	S
					1026	1027
3	4	5	6	7	8	9
1028	1029	1030	1031	1032	1033	1034
10	11	12	13	14	15	16
1035	1036	1037	1038	1039	1040	1041
17	18	19	20	21	22	23
1042	1043	1044	1045	1046	1047	1048
24	25	26	27	28	29	30
1049	1050	1051	1052	1053	1054	1055
31						
1056						

Jun-26						
S	M	T	W	R	F	S
	1057	1058	1059	1060	1061	1062
7	8	9	10	11	12	13
1063	1064	1065	1066	1067	1068	1069
14	15	16	17	18	19	20
1070	1071	1072	1073	1074	1075	1076
21	22	23	24	25	26	27
1077	1078	1079	1080	1081	1082	1083
28	29	30				
1084	1085	1086				

Jul-26						
S	M	T	W	R	F	S
			1087	1088	1089	1090
5	6	7	8	9	10	11
1091	1092	1093	1094	1095	1096	1097
12	13	14	15	16	17	18
1098	1099	1100	1101	1102	1103	1104
19	20	21	22	23	24	25
1105	1106	1107	1108	1109	1110	1111
26	27	28	29	30	31	
1112	1113	1114	1115	1116	1117	

Aug-26						
S	M	T	W	R	F	S
						1118
2	3	4	5	6	7	8
1119	1120	1121	1122	1123	1124	1125
9	10	11	12	13	14	15
1126	1127	1128	1129	1130	1131	1132
16	17	18	19	20	21	22
1133	1134	1135	1136	1137	1138	1139
23	24	25	26	27	28	29
1140	1141	1142	1143	1144	1145	1146
30	31					
1147	1148					

Sep-26						
S	M	T	W	R	F	S
		1149	1150	1151	1152	1153
6	7	8	9	10	11	12
1154	1155	1156	1157	1158	1159	1160
13	14	15	16	17	18	19
1161	1162	1163	1164	1165	1166	1167
20	21	22	23	24	25	26
1168	1169	1170	1171	1172	1173	1174
27	28	29	30			
1175	1176	1177	1178			

Oct-26						
S	M	T	W	R	F	S
				1179	1180	1181
4	5	6	7	8	9	10
1182	1183	1184	1185	1186	1187	1188
11	12	13	14	15	16	17
1189	1190	1191	1192	1193	1194	1195
18	19	20	21	22	23	24
1196	1197	1198	1199	1200	1201	1202
25	26	27	28	29	30	31
1203	1204	1205	1206	1207	1208	1209

Nov-26						
S	M	T	W	R	F	S
1210	1211	1212	1213	1214	1215	1216
8	9	10	11	12	13	14
1217	1218	1219	1220	1221	1222	1223
15	16	17	18	19	20	21
1224	1225	1226	1227	1228	1229	1230
22	23	24	25	26	27	28
1231	1232	1233	1234	1235	1236	1237
29	30					
1238	1239					

Dec-26						
S	M	T	W	R	F	S
		1240	1241	1242	1243	1244
6	7	8	9	10	11	12
1245	1246	1247	1248	1249	1250	1251
13	14	15	16	17	18	19
1252	1253	1254	1255	1256	1257	1258
20	21	22	23	24	25	26
1259	1260	1261	1262	1263	1264	1265
27	28	29	30	31		
1266	1267	1268	1269	1270		

Technical Memorandum

Project Name: Northpark Drive Overpass
Project No.: N-T10000-0001-3
Subject: TIA No. 1
Memo Date: December 17, 2024

Executive Summary

The evaluation of the Contractor’s Time Impact Analysis 01 (TIA-01) submittal for the Northpark Drive Overpass finds merit for a time extension of **195** days. Based on the nature of the events, the impact is classified as an excusable, compensable delay.

Table 1: Time Impact Summary

Schedule	Data Date	Substantial Completion	Duration (Days)	Delta (Days)
Baseline	10-Jul-23	30-Jan-26	935	-
Pre-Impact	18-Sep-23	29-Apr-26	1024	89
Post-Impact	11-Apr-24	13-Aug-26	1130	106
			Total	195

Section I. Time Impact Analysis Requirements

In accordance with TxDOT Standard Specifications Item 8, Section 5.5.4. Time Impact Analysis:

When directed, provide a time impact analysis. A time impact analysis is an evaluation of the effects of impacts on the project. A time impact analysis consists of the following steps:

- Step 1.** Establish the status of the project immediately before the impact.
- Step 2.** Predict the effect of the impact on the schedule update used in Step 1.
- Step 3.** Track the effects of the impact on the schedule during its occurrence.
- Step 4.** Establish the status of the project after the impact’s effect has ended and provide details identifying any mitigating actions or circumstances used to keep the project ongoing during the impact period.

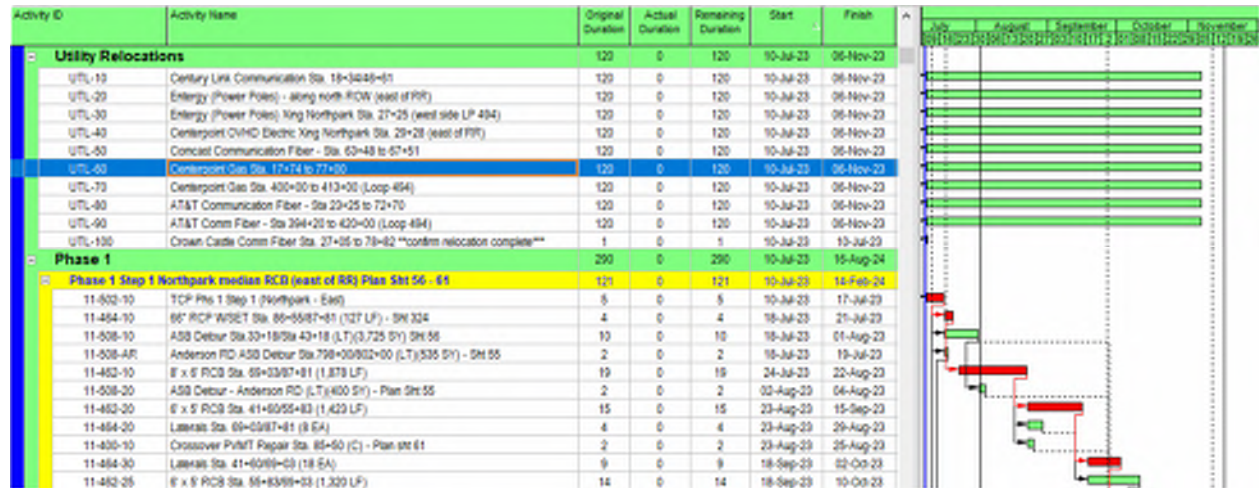
Section II. Contractor’s TIA Submittal Evaluation

The TIA narrative asserts an impact based on utility conflicts, specifically CenterPoint Energy (Gas), from the start of the project, beginning with the Baseline Schedule, through April 10, 2024, following completion of the relocation of the Brightspeed Communications line. In total, the

proposed impact equates to 195 days.

The Baseline Schedule (Data Date 10-Jul-23) does not show any utility impacts as being critical. Activity UTL-60 [Centerpoint Gas Sta. 17+74 to 77+00] is not tied as a predecessor to any work. The critical path is running through Phase 1 Step 1 Northpark Median beginning with Activity 11-502010 [TCP Phs 1 Step 1 (Northpark- East)]. See Figure 1.

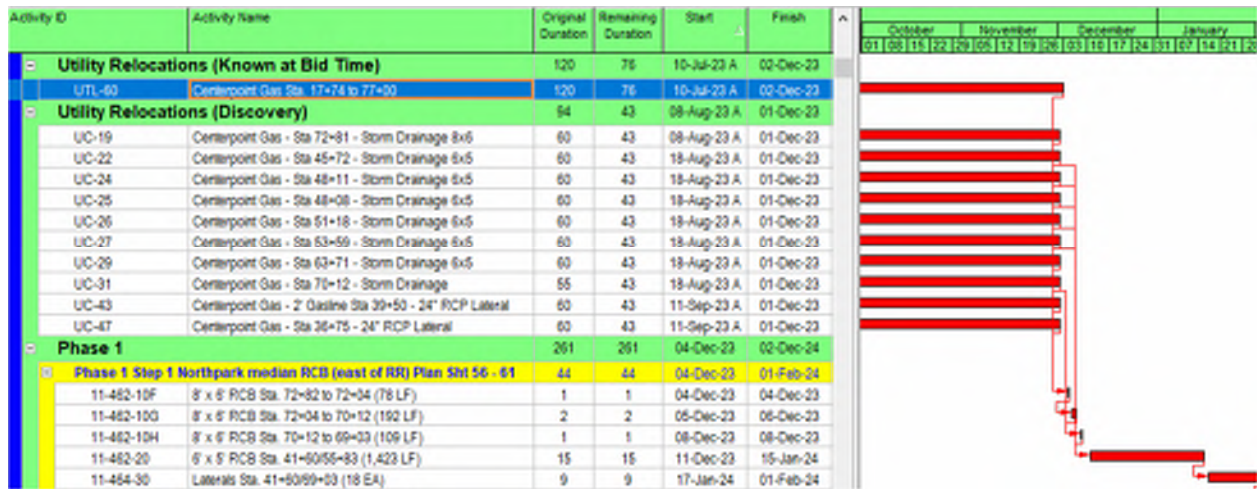
Figure 1: Baseline Schedule



However, HNTB acknowledges there were utility conflicts from the start of the project, specifically the CenterPoint Gas Line, the impact of which was uncertain at the time. Therefore, it is reasonable to understand why the conflicts were not modeled in the Baseline Schedule.

The Pre-Impact Schedule (Data Date 18-Sep-23) reflects the actual impact of Activity UTL-60, which is on the critical path, driving Activity 11-462-10F [8' x 6' RCB Sta. 72+82 to 72+04 (78 LF)]. See Figure 2.

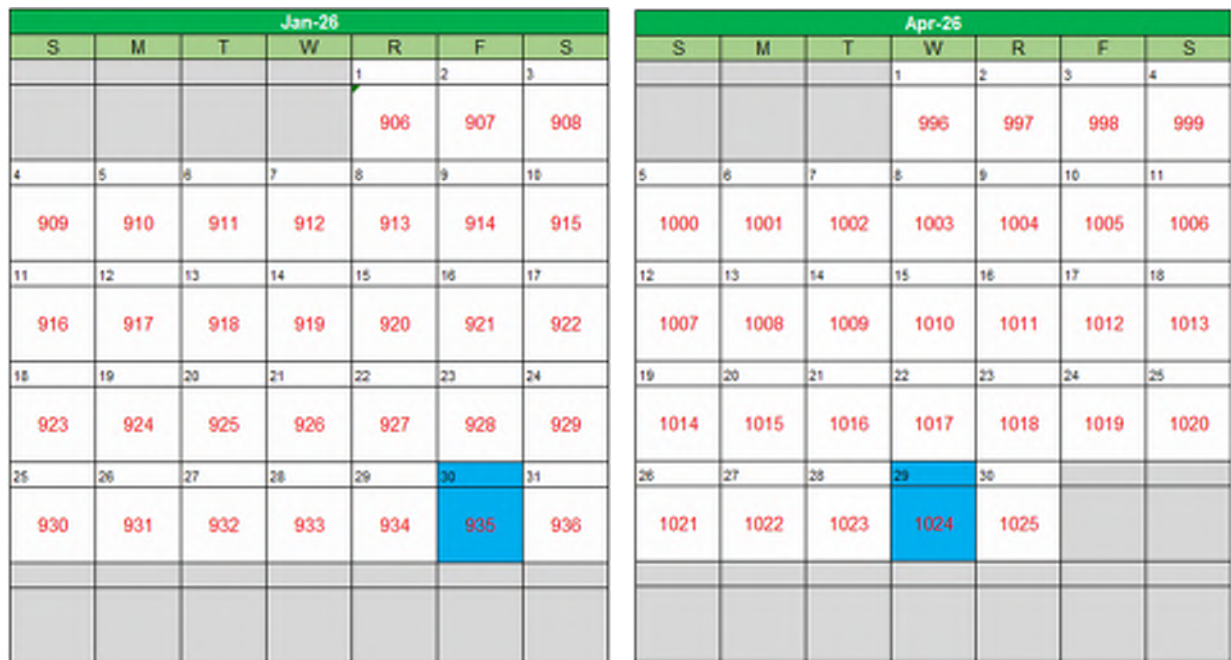
Figure 2: Pre-Impact Schedule



Note, there is no Activity 11-462-10F [8' x 6' RCB Sta. 72+82 to 72+04 (78 LF)] in the Baseline Schedule because the work for the 8' x 6' RCB from Sta. 72+82 to 72+04 was subsequently split into sections, allowing work to progress as access permitted.

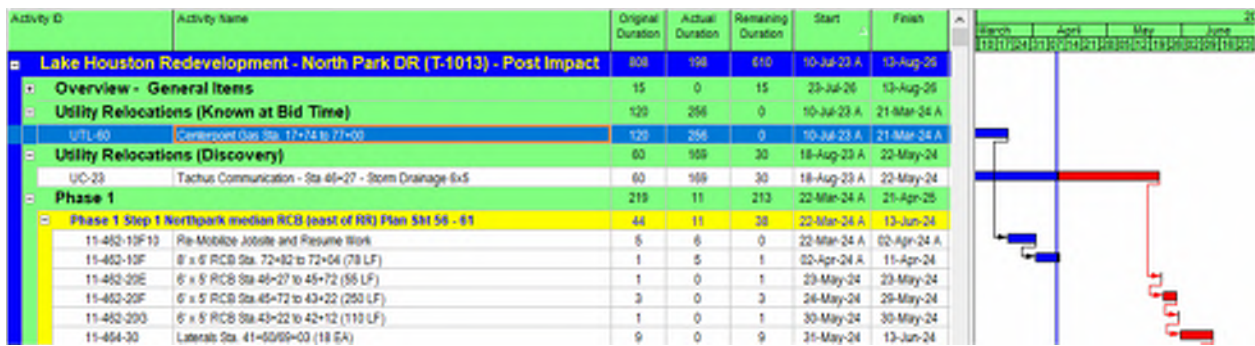
Acknowledging the utility impacts from the Baseline Schedule to the Pre-Impact Schedule yields an impact of $1,024 - 935 = 89$ days based on the adjusted finish date (Substantial Completion) of **30-Jan-26** (935 days) in the Baseline Schedule to **29-Apr-26** (1,024 days) in the Pre-Impact Schedule. See Attachment A for a complete plot of the Pre-Impact Schedule critical path and Figure 3 below for the Contract Time Charges.

Figure 3: Contract Time Charges



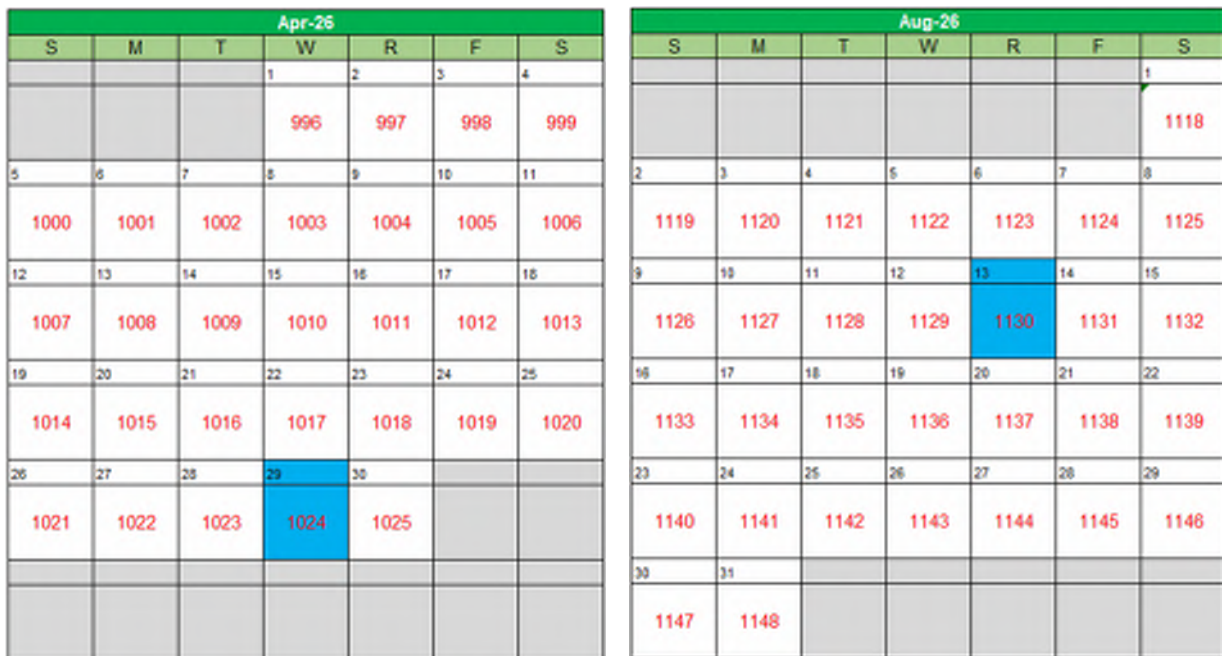
In the Post-Impact Schedule (Data Date 11-Apr-24), Activity UTL-60 is showing an actual finish of 21-Mar-24. Per the TIA narrative, upon remobilization to begin work on the 8' x 6' RBC, the Brightspeed Communication lines were identified in conflict. The lines were relocated on 10-Apr-24 allowing work to resume on the 8' x 6' RBC, as shown in the Post-Impact Schedule. See Figure 4 below and Attachment B for a complete plot of the Post-Impact Schedule.

Figure 4: Post-Impact Schedule



The adjusted finish date (Substantial Completion) of 13-Aug-26 (1,024 days) in the Post-Impact Schedule compared to 29-Apr-26 (1,130 days) in the Pre-Impact Schedule yields an impact of 1,130 – 1,024 = **106** days. See Figure 5 below and Attachment C for the complete Contract Time Charge Calendar.

Figure 5: Contract Time Charges



Therefore, the total impact demonstrated in the TIA is **89 + 106 = 195** days.

Summary & Recommendations

The Contractor's TIA submittal demonstrates a time impact based on utility conflicts. The total impact equates to a total of **195** days. Due the nature of the event, the impact is classified as a compensable delay.

Attachments:

- A: Pre-Impact Schedule
- B: Post-Impact Schedule
- C: Contract Time Charge Calendar