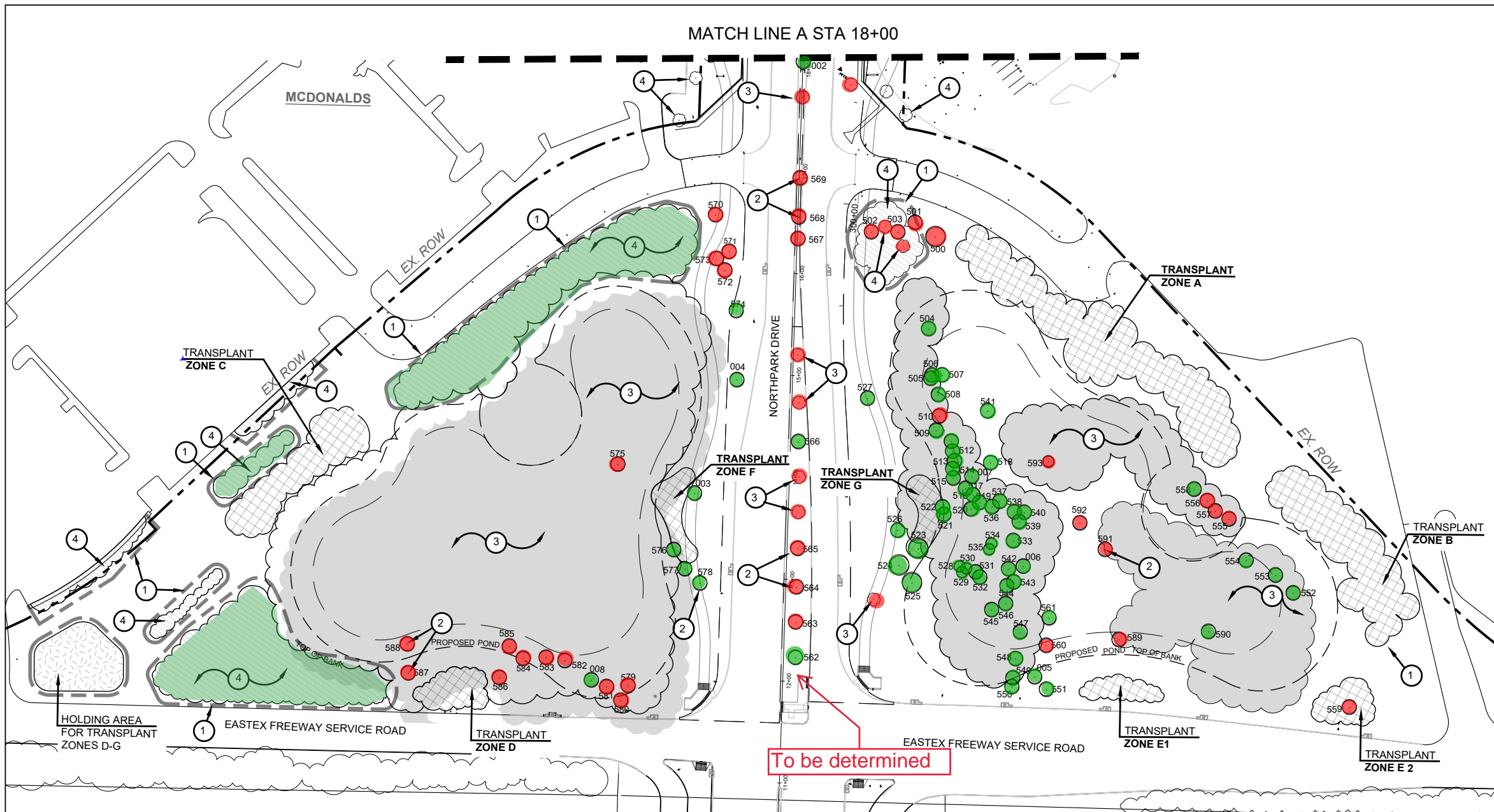


MATCH LINE A STA 18+00

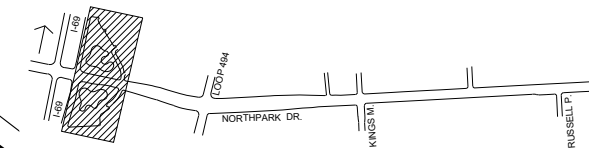


0 30 60 120  
SCALE: 1"=120'



SHEET QUANTITIES - TREE PRESERVATION			
ITEM	DESCRIPTION	UNIT	QNTY.
LS-48	TREE PROTECTION	AC	1.0
LS-49	TRANSPLANT PLANT MATERIAL (2.5"-4")	EA	2
LS-50	TRANSPLANT PLANT MATERIAL (5"-7")	EA	9
LS-51	TRANSPLANT PLANT MATERIAL (8"-10")	EA	19
LS-52	TRANSPLANT PLANT MATERIAL (11"-13")	EA	23
	TRANSPLANT PLANT MATERIAL (14"-17")	EA	13
LS-53	TRANSPLANT PLANT MTL. (8" - 13")(HOLD) (REPLANT)	EA	12

**TRANSPLANT NOTES:**  
 1. TREES DESIGNATED FOR TRANSPLANT ZONE A-C SHALL BE TRANSPLANTED TO THE FINAL LOCATION IMMEDIATELY. (SEE PLANTING SHEET 8 & 9)  
 2. TREES DESIGNATED FOR TRANSPLANT D-G SHALL BE HELD IN HOLDING AREAS UNTIL THE FINAL LOCATIONS ARE AVAILABLE. (CONTRACTOR SHALL PROVIDE WATER AND PROTECTION THROUGHOUT THE DURATION.)

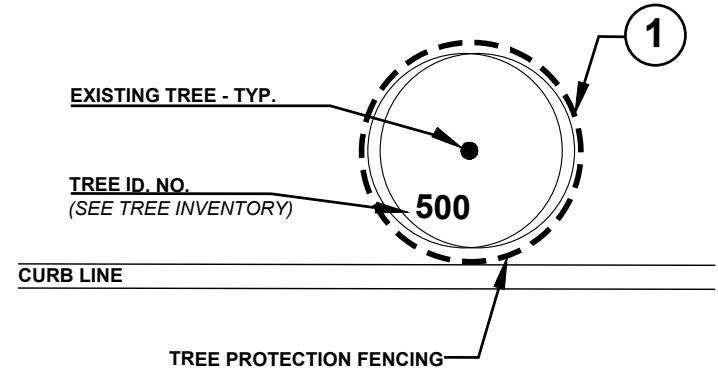


To be determined

**GENERAL NOTES:**

- LOCATIONS OF TREE PRESERVATION FENCING IS APPROXIMATE. COORDINATE WITH LANDSCAPE ARCHITECT PRIOR TO CONTACTING ARCHITECTS.
- CONTRACTOR SHALL SEEK PRIOR APPROVAL FROM THE CONTRACTORS ARBORIST, CITY URBAN FORESTER, AND LANDSCAPE ARCHITECT PRIOR TO INITIATION OF TREE REMOVAL AND/OR TREE PROTECTION ACTIVITIES WITHIN THE PROJECT SCOPE OF WORK.
- IT IS THE RESPONSIBILITY OF THE CONTRACTOR TO INSURE THAT NO DAMAGE TO EXISTING TREE TO BE PROTECTED AND/OR THOSE THAT HAVE THEIR TRUNKS OUTSIDE OF THE PROJECT LIMITS BUT HAVE SIGNIFICANT BRANCH OVERHANG INTO THE PROJECT LIMITS.
- THE CONTRACTOR SHALL NOT, AT ANY TIME, PARK CONSTRUCTION VEHICLES, MATERIALS, OR EQUIPMENT INSIDE OF THE TREE PROTECTION ZONE (TPZ) OF TREES TO BE PROTECTED.
- SEE TREE PRESERVATION DETAILS AND SPECIFICATIONS FOR DISPOSITION AND CONDITIONAL TREATMENT OF TREES NOTED ON THE DRAWINGS
- ALL NOTED TREES ON DRAWINGS MAY REQUIRE ADDITIONAL CONDITIONAL TREATMENT OTHER THAN NOTED ON THE PLANS. SEE TREE INVENTORY AND TREE PRESERVATION DETAILS.
- CONTRACTOR TO PROVIDE WATER, TREATMENT FOR BORERS AND OTHER INSECTICIDE TREATMENTS FOR TREES TO BE PRESERVED AS NEEDED PER ARBORISTS RECOMMENDATIONS
- CONTRACTOR TO EXERCISE CAUTION WHEN WORKING AROUND ALL EXISTING TREES REGARDLESS OF SPECIFIC MEASURES THAT ARE NOTED ON THESE PLANS AND DETAILS AT ALL TIMES AND TO THE EXTENT REQUIRED BY THE CONTRACT DOCUMENTS AND TECHNICAL SPECIFICATIONS.
- CONTRACTOR TO PROVIDE FOR ALL COSTS TO SUPPLY TEMPORARY WATERING AND PROTECTION OF TREES LOCATED IN THE TREE HOLDING AREAS TO BE TRANSPLANTED TO FINAL LOCATION AT LATER DATE (INCIDENTAL TO 1003)

**PRESERVATION LEGEND:**



**PLAN NOTES / LEGEND:**

- TREE PROTECTION FENCING, TYPICAL SEE TREE PRESERVATION DETAILS
- TREE TO BE TRANSPLANTED, SEE TREE PRESERVATION DETAILS
- EXISTING TREES TO BE REMOVED TYPICAL
- EXISTING TREES TO BE PRESERVED IN PLACE, SEE TREE PRESERVATION DETAILS, GENERAL NOTES
- TRANSPLANT TREE LOCATION ZONE A- G
- HOLDING AREAS FOR TRANSPLANTED TREES, FINAL LOCATION TO BE DETERMINED.

1	ARCHITECTURAL SUPPLEMENT NO. 1 Rev	MM	09/19/2023
NO.	REVISIONS	BY	DATE

M2L ASSOCIATES, INC.  
8955 KATY FWY, SUITE 300  
HOUSTON, TX 77024

**HNTB**  
HNTB Corporation  
The HNTB Companies  
Infrastructure Solutions  
Firm Registration Number 420

CITY OF HOUSTON  
HOUSTON PUBLIC WORKS

LAKE HOUSTON REDEVELOPMENT AUTHORITY & TRIZ 10  
200 ALLEN HUNTON ANDREWS  
KURTH LLP  
800 TRAVIS, SUITE 4200  
HOUSTON, TEXAS 77002

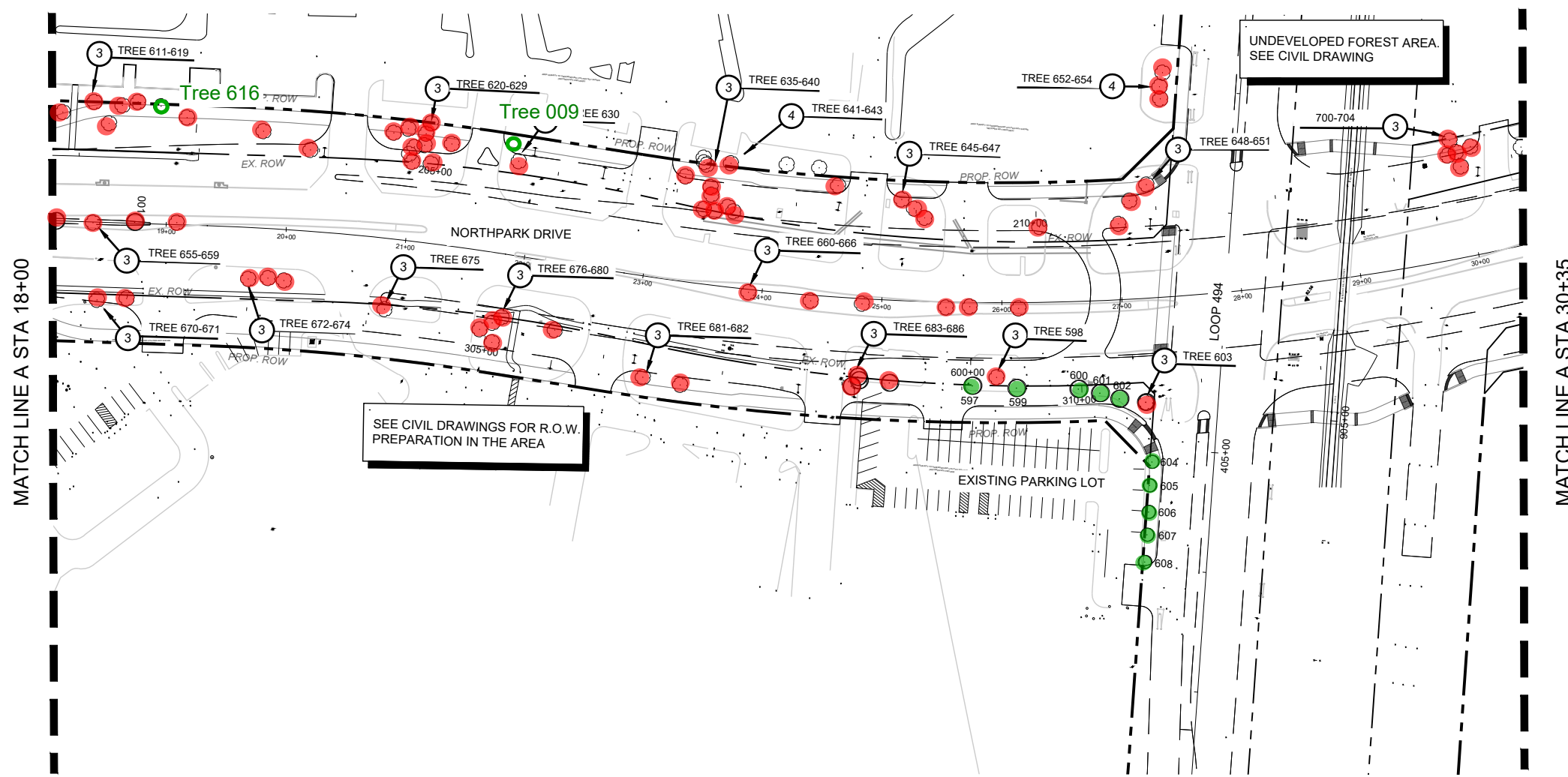
**NORTH PARK DRIVE**

**TREE PRESERVATION TXDOT R.O.W**

**SHEET 1 OF 5**

DESIGNED:	FED. RD. DIV. No.	STATE	CITY OF HOUSTON WBS	HIGHWAY No.
CHECKED:	6	TEXAS	SEE TITLE SHEET	CS
DRAWN:	STATE DISTRICT	COUNTY	CONTROL SECTION No.	JOB No.
CHECKED:	HOU	MONTGOMERY	0912 37	232

616



SHEET QUANTITIES - TREE PRESERVATION			
ITEM	DESCRIPTION	UNIT	QNTY.
LS-48	TREE PROTECTION	AC	0.3
LS-49	TRANSPLANT PLANT MATERIAL (2.5"-4")	EA	2
LS-50	TRANSPLANT PLANT MATERIAL (5"-7")	EA	0
LS-51	TRANSPLANT PLANT MATERIAL (8"-10")	EA	1
LS-52	TRANSPLANT PLANT MATERIAL (11"-13")	EA	6
	TRANSPLANT PLANT MATERIAL (14"-17")	EA	3
LS-53	TRANSPLANT PLANT MTL. (8" - 13")(HOLD) (REPLANT)	EA	0

**TRANSPLANT NOTES:**

- TREES DESIGNATED FOR TRANSPLANT ZONE A-C SHALL BE TRANSPLANTED TO THE FINAL LOCATION IMMEDIATELY. (SEE PLANTING SHEET 8 & 9)
- TREES DESIGNATED FOR TRANSPLANT D-G SHALL BE HELD IN HOLDING AREAS UNTIL THE FINAL LOCATIONS ARE AVAILABLE. (CONTRACTOR SHALL PROVIDE WATER AND PROTECTION THROUGHOUT THE DURATION.)



MATCH LINE A STA 18+00

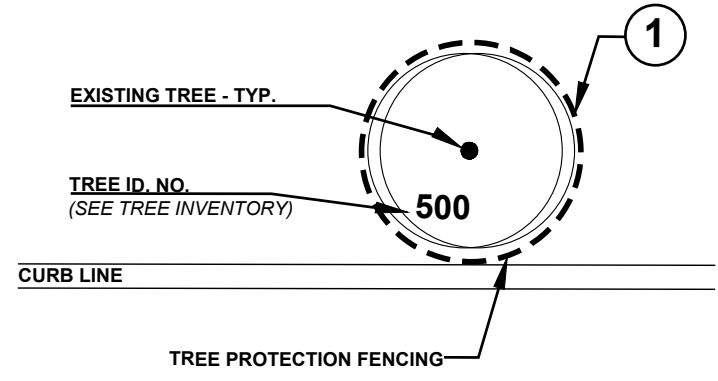
MATCH LINE A STA 30+35

SEE CIVIL DRAWINGS FOR R.O.W. PREPARATION IN THE AREA

**GENERAL NOTES:**

- LOCATIONS OF TREE PRESERVATION FENCING IS APPROXIMATE. COORDINATE WITH LANDSCAPE ARCHITECT PRIOR TO CONTACTING ARCHITECTS.
- CONTRACTOR SHALL SEEK PRIOR APPROVAL FROM THE CONTRACTORS ARBORIST, CITY URBAN FORESTER, AND LANDSCAPE ARCHITECT PRIOR TO INITIATION OF TREE REMOVAL AND/OR TREE PROTECTION ACTIVITIES WITHIN THE PROJECT SCOPE OF WORK.
- IT IS THE RESPONSIBILITY OF THE CONTRACTOR TO INSURE THAT NO DAMAGE TO EXISTING TREE TO BE PROTECTED AND/OR THOSE THAT HAVE THEIR TRUNKS OUTSIDE OF THE PROJECT LIMITS BUT HAVE SIGNIFICANT BRANCH OVERHANG INTO THE PROJECT LIMITS.
- THE CONTRACTOR SHALL NOT, AT ANY TIME, PARK CONSTRUCTION VEHICLES, MATERIALS, OR EQUIPMENT INSIDE OF THE TREE PROTECTION ZONE (TPZ) OF TREES TO BE PROTECTED.
- SEE TREE PRESERVATION DETAILS AND SPECIFICATIONS FOR DISPOSITION AND CONDITIONAL TREATMENT OF TREES NOTED ON THE DRAWINGS
- ALL NOTED TREES ON DRAWINGS MAY REQUIRE ADDITIONAL CONDITIONAL TREATMENT OTHER THAN NOTED ON THE PLANS. SEE TREE INVENTORY AND TREE PRESERVATION DETAILS.
- CONTRACTOR TO PROVIDE WATER, TREATMENT FOR BORERS AND OTHER INSECTICIDE TREATMENTS FOR TREES TO BE PRESERVED AS NEEDED PER ARBORISTS RECOMMENDATIONS
- CONTRACTOR TO EXERCISE CAUTION WHEN WORKING AROUND ALL EXISTING TREES REGARDLESS OF SPECIFIC MEASURES THAT ARE NOTED ON THESE PLANS AND DETAILS AT ALL TIMES AND TO THE EXTENT REQUIRED BY THE CONTRACT DOCUMENTS AND TECHNICAL SPECIFICATIONS.
- CONTRACTOR TO PROVIDE FOR ALL COSTS TO SUPPLY TEMPORARY WATERING AND PROTECTION OF TREES LOCATED IN THE TREE HOLDING AREAS TO BE TRANSPLANTED TO FINAL LOCATION AT LATER DATE (INCIDENTAL TO 1003)

**PRESERVATION LEGEND:**



**PLAN NOTES / LEGEND:**

- TREE PROTECTION FENCING, TYPICAL SEE TREE PRESERVATION DETAILS
- TREE TO BE TRANSPLANTED, SEE TREE PRESERVATION DETAILS
- EXISTING TREES TO BE REMOVED TYPICAL
- EXISTING TREES TO BE PRESERVED IN PLACE, SEE TREE PRESERVATION DETAILS, GENERAL NOTES
- TRANSPLANT TREE LOCATION ZONE A- G
- HOLDING AREAS FOR TRANSPLANTED TREES, FINAL LOCATION TO BE DETERMINED.

NO.	REVISIONS	BY	DATE
1	ARCHITECTURAL SUPPLEMENT NO. 1 Rev	MM	09/19/2023

M2L ASSOCIATES, INC.  
8955 KATY FWY, SUITE 300  
HOUSTON, TX 77024

**HNTB**  
The HNTB Companies  
Infrastructure Solutions  
Firm Registration Number 420

CITY OF HOUSTON  
HOUSTON PUBLIC WORKS

LAKE HOUSTON REDEVELOPMENT AUTHORITY & TRIZ 10  
200 ALLEN HUNTON ANDREWS  
KURTH LLP  
800 TRAVIS, SUITE 4200  
HOUSTON, TEXAS 77002

**NORTH PARK DRIVE  
TREE PRESERVATION  
TXDOT R.O.W**

**SHEET 2 OF 5**

DESIGNED:	FED. RD. DIV. No.	STATE	CITY OF HOUSTON WBS	HIGHWAY No.
CHECKED:	6	TEXAS	SEE TITLE SHEET	CS
DRAWN:	STATE DISTRICT	COUNTY	CONTROL SECTION No.	JOB No.
CHECKED:	HOU	MONTGOMERY	0912 37	232

SHEET No. **617**

TREE ID	SPECIES	CALIPER (IN)	SPADE SIZE	PLANTING ZN.	EXISTING LOC.
504	PINE	8-10	100	Zone A	South side of Northpark Dr.
505	PINE	10-11.5	125	Zone A	South side of Northpark Dr.
506	PINE	10-12	125	Zone A	South side of Northpark Dr.
507	PINE	10-12	125	Zone A	South side of Northpark Dr.
508	RED OAK	9-10	100	Zone A	South side of Northpark Dr.
509	RED OAK	10-11	125	Zone A	South side of Northpark Dr.
510	RED OAK	5-6	65-100	Zone A	South side of Northpark Dr.
511	PINE	9-10	100	Zone C	South side of Northpark Dr.
512	PINE	8-9	100	Zone A	South side of Northpark Dr.
513	PINE	11-12	125	Zone A	South side of Northpark Dr.
514	PINE	12-13	125	Zone C	South side of Northpark Dr.
515	PINE	10-11	125	Zone B	South side of Northpark Dr.
516	PINE	10-11.5	125	Zone C	South side of Northpark Dr.
517	PINE	11-13	125	Zone C	South side of Northpark Dr.
518	PINE	13-14	168	Zone C	South side of Northpark Dr.
519	PINE	8.5-9.5	100	Zone C	South side of Northpark Dr.
520	SHUMARD OAK	11-11	125	Zone C	South side of Northpark Dr.
521	PINE	11-12.5	125	Zone C	South side of Northpark Dr.
522	PINE	13-14	168	Zone C	South side of Northpark Dr.
523	LIVE OAK	14.5-17	168	Zone C	South side of Northpark Dr.
524	OAK	13.5-15	168	Zone G	South side of Northpark Dr.
525	LIVE OAK	13-15	168	Zone F	South side of Northpark Dr.
526	RED OAK	11-14	168	Zone F	South side of Northpark Dr.
529	RED OAK	12-13.5	168	Zone E	South side of Northpark Dr.
530	SHUMARD OAK	6-7	65-100	Zone B	South side of Northpark Dr.
531	SHUMARD OAK	6-7	65-100	Zone C	South side of Northpark Dr.
532	SHUMARD OAK	3-4	65	Zone C	South side of Northpark Dr.
533	RED OAK	7-8.5	100	Zone D	South side of Northpark Dr.
534	RED OAK	10.5-12	125	Zone G	South side of Northpark Dr.
535	RED OAK	9-10	100	Zone G	South side of Northpark Dr.
536	PINE	10-11	125	Zone A	South side of Northpark Dr.
537	PINE	12-14	168	Zone B	South side of Northpark Dr.
538	PINE	8.5-10.5	125	Zone A	South side of Northpark Dr.
539	SHUMARD OAK	6.5-9	100	Zone D	South side of Northpark Dr.
540	RED OAK	7-8	100	Zone D	South side of Northpark Dr.
541	PINE	12-13	125	Zone A	South side of Northpark Dr.
542	RED OAK	10-12	125	Zone A	South side of Northpark Dr.
543	SHUMARD OAK	7-8	100	Zone B	South side of Northpark Dr.
544	PINE	7.5-8	100	Zone B	South side of Northpark Dr.
545	SHUMARD OAK	9-10	100	Zone C	South side of Northpark Dr.
546	SHUMARD OAK	11-13	125	Zone E	South side of Northpark Dr.
547	RED OAK	6-7	65-100	Zone B	South side of Northpark Dr.
548	PINE	9.5-11	125	Zone B	South side of Northpark Dr.
549	PINE	10-12	125	Zone B	South side of Northpark Dr.
550	PINE	11.5-13.5	125	Zone B	South side of Northpark Dr.
551	PINE	11.5-13	125	Zone B	South side of Northpark Dr.
552	PINE	10-12	125	Zone B	South side of Northpark Dr.
553	PINE	8.5-10	100	Zone A	South side of Northpark Dr.
554	PINE	5.5-6.5	65-100	Zone B	South side of Northpark Dr.
558	PINE	8-9	100	Zone A	South side of Northpark Dr.
561	WATER OAK	3.5-4.5	65-100	Zone C	South side of Northpark Dr.
562	LIVE OAK	17-20	ArborLift	Zone G	Median of Northpark Dr.
566	LIVE OAK	15-15	168	Zone A	Median of Northpark Dr.
574	LIVE OAK	14-14	168	Zone B	North side of Northpark Dr.
576	WATER OAK	12-14	168	Zone B	North side of Northpark Dr.
577	WATER OAK	14-16	168	Zone A	North side of Northpark Dr.
578	OVERCUP OAK	12.5-14	168	Zone B	North side of Northpark Dr.
590	RED BUD	5-6.5	65-100	Zone A	South side of Northpark Dr.
597	LIVE OAK	15.5-16	168	Zone B	South side of Northpark Dr.
599	LIVE OAK	9.5-11	125	Zone A	South side of Northpark Dr.
600	LIVE OAK	14-14.5	168	Zone B	South side of Northpark Dr.
601	LIVE OAK	12.5-13	125	Zone B	South side of Northpark Dr.
602	LIVE OAK	8-9	100	Zone C	South side of Northpark Dr.
604	LIVE OAK	14-13.5	168	Zone B	South side of Northpark Dr.
605	LIVE OAK	12.5-13	125	Zone B	South side of Northpark Dr.
606	LIVE OAK	11.5-12	125	Zone A	South side of Northpark Dr.

TREE ID	SPECIES	CALIPER (IN)	SPADE SIZE	PLANTING ZN.	EXISTING LOC.
607	LIVE OAK	11-10.5	125	Zone A	South side of Northpark Dr.
608	LIVE OAK	12-12	125	Zone A	South side of Northpark Dr.
616	OAK	4	65	Zone A	North side of Northpark Dr.
001	OAK	9.5-9.5	100	Zone C	Median of Northpark Dr.
002	OAK	10-10	100	Zone F	Median of Northpark Dr.
003	BURR OAK	7-9.5	100	Zone C	North side of Northpark Dr.
004	BURR OAK	5-6.5	65-100	Zone B	North side of Northpark Dr.
005	SHUMARD OAK	7.5-8.5	100	Zone B	South side of Northpark Dr.
006	RED OAK	9.5-11	125	Zone E	South side of Northpark Dr.
007	RED OAK	8-9	100	Zone A	South side of Northpark Dr.
008	SWEET GUM	6-7	65-100	Zone A	North side of Northpark Dr.
009	LIVE OAK	4-7	65	Zone A	North side of Northpark Dr.

SHEET QUANTITIES - TRANSPLANTING SUMMARY ORIGINAL BID			
ITEM	DESCRIPTION	UNIT	QTY
LS-49	TRANSPLANT MATERIAL (2 1/2" - 4")	EA	24
LS-50	TRANSPLANT MATERIAL (5" - 7")	EA	2
LS-51	TRANSPLANT MATERIAL (8" - 10")	EA	20
LS-52	TRANSPLANT MATERIAL (11" - 13")	EA	32
	TRANSPLANT MATERIAL (14" - 17")	EA	0
TOTAL			78
ZONES D, E, F, AND G TRANSPLANTS FROM HOLDING AREA			
LS-53	TRANSPLANT MATERIAL (8" - 10")	EA	3
	TRANSPLANT MATERIAL (11" - 13")	EA	9
	TRANSPLANT MATERIAL (14" - 17")	EA	0

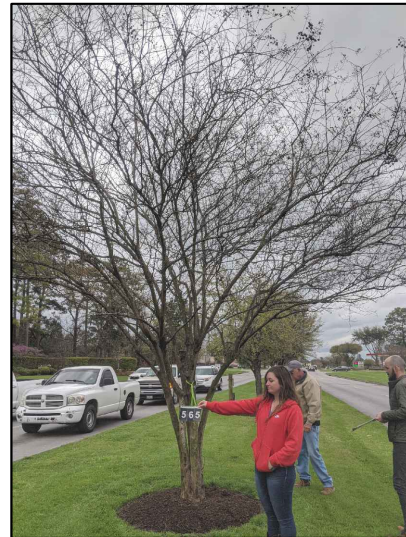
SHEET QUANTITIES - TRANSPLANTING SUMMARY REVISED 09-12-2023			
ITEM	DESCRIPTION	UNIT	QTY
LS-49	TRANSPLANT MATERIAL (2 1/2" - 4")	EA	3
LS-50	TRANSPLANT MATERIAL (5" - 7")	EA	9
LS-51	TRANSPLANT MATERIAL (8" - 10")	EA	20
LS-52	TRANSPLANT MATERIAL (11" - 13")	EA	29
	TRANSPLANT MATERIAL (14" - 17")	EA	16
	TRANSPLANT MATERIAL (ARBOR LIFT)	EA	1
TOTAL			78
ZONES D, E, F, AND G TRANSPLANTS FROM HOLDING AREA			
LS-53	TRANSPLANT MATERIAL (8" - 10")	EA	6
	TRANSPLANT MATERIAL (11" - 13")	EA	5
	TRANSPLANT MATERIAL (14" - 17")	EA	3



**TRANSPLANT NOTES:**

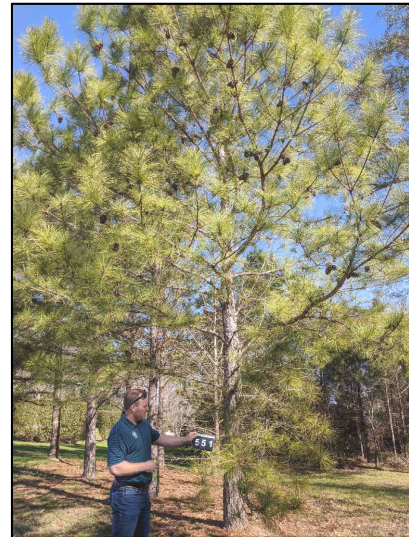
- A. CONTRACTOR TO STAKE OUT LOCATION OF FINAL LOCATIONS OF TREE TRANSPLANTS IN THE FIELD PRIOR TO MOVING.
- B. SEE GENERAL NOTES FOR ADDITIONAL TREE TRANSPLANTING AND HOLDING AREA REQUIREMENT.
- C. ZONE D-G TREES SHOULD BE TRANSPLANTED TO HOLDING AREAS, MAINTAINED BY CONTRACTOR OR UP TO 12 MONTHS AND THEN TRANSPLANTED TO FINAL LOCATION. (INCIDENTAL TO 1003)
- D. ZONE A-C WILL BE TRANSPLANTED ON-SITE TO FINAL LOCATIONS AND MAINTAINED BY CONTRACTOR FOR DURATION OF CONSTRUCTION AND THROUGH WARRANTY PERIOD.

1	ARCHITECTURAL SUPPLEMENT NO. 1 Rev	MM	09/19/2023
NO.	REVISIONS	BY	DATE
		<b>M2L ASSOCIATES, INC.</b> 8955 KATY FWY, SUITE 300 HOUSTON, TX 77024	
		HNTB Corporation The HNTB Companies Infrastructure Solutions Firm Registration Number 420	
CITY OF HOUSTON		 LAKE HOUSTON REDEVELOPMENT AUTHORITY & TRIZ 10 C/O ALLEN HUNTON ANDREWS KURTH LLP 800 TRAVIS, SUITE 4200 HOUSTON, TEXAS 77002	
HOUSTON PUBLIC WORKS			
<b>NORTHPARK DRIVE</b>  <b>TRANSPLANTED TREE INVENTORY</b>			
DESIGNED:	FED. DIV. No.	STATE	CITY OF HOUSTON WBS
CHECKED:	6	TEXAS	SEE TITLE SHEET
DRAWN:	STATE DISTRICT	COUNTY	CONTROL SECTION
CHECKED:	HOU	MONTGOMERY	0912 37 232
			HIGHWAY No. CS
			JOB No.
			SHEET No.



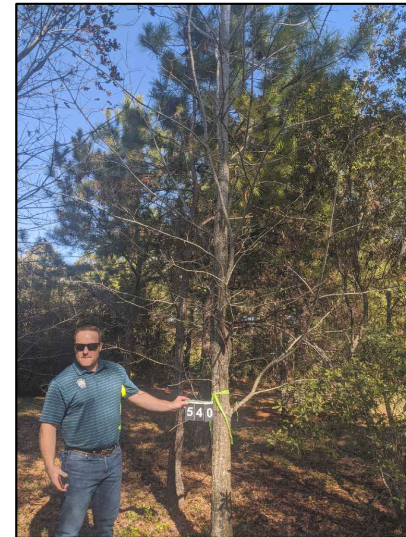
TREE TYPE	CAL.	QTY	SPADE
RED BUD	2-1/2"-4"	0	65"
RED BUD	4"-8"	1	65"-100"
RED BUD	8"-10"	0	100"
RED BUD	11"-13"	0	125"
RED BUD	14"-17"	0	168"

TOTAL 1



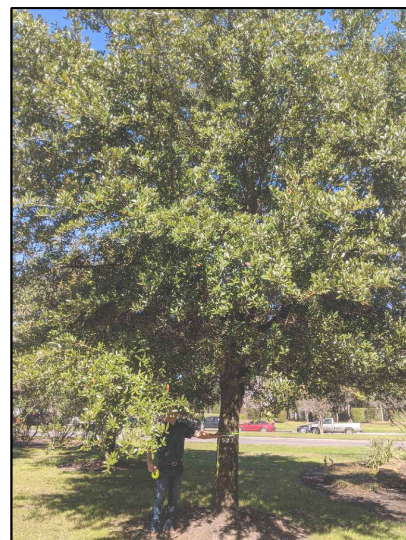
TREE TYPE	CAL.	QTY	SPADE
LOBLOLLY PINE	2-1/2"-4"	0	65"
LOBLOLLY PINE	4"-8"	1	65"-100"
LOBLOLLY PINE	8"-10"	7	100"
LOBLOLLY PINE	11"-13"	17	125"
LOBLOLLY PINE	14"-17"	3	168"

TOTAL 28



TREE TYPE	CAL.	QTY	SPADE
RED OAK	2-1/2"-4"	0	65"
RED OAK	4"-7"	2	65"-100"
RED OAK	8"-10"	5	100"
RED OAK	11"-13"	4	125"
RED OAK	14"-17"	2	168"

TOTAL 13



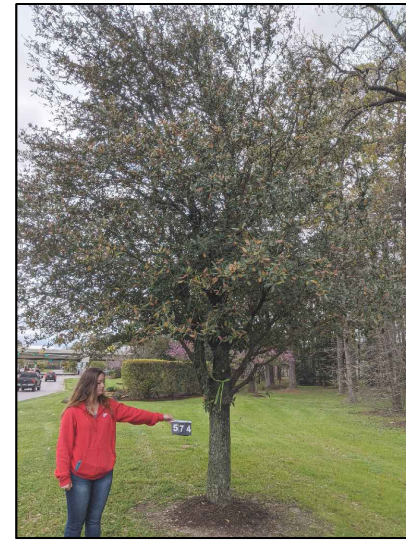
TREE TYPE	CAL.	QTY	SPADE
LIVE OAK	2-1/2"-4"	1	65"
LIVE OAK	4"-7"	0	65"-100"
LIVE OAK	8"-10"	1	100"
LIVE OAK	11"-13"	6	125"
LIVE OAK	14"-17"	7	168"
LIVE OAK	18"-22"	1	ArborLift.

TOTAL 16



TREE TYPE	CAL.	QTY	SPADE
SWEET GUM	2-1/2"-4"	0	65"
SWEET GUM	4"-7"	1	65"-100"
SWEET GUM	8"-10"	0	100"
SWEET GUM	11"-13"	0	125"
SWEETGUM	14"-17"	0	168"

TOTAL 1



\*Water Oak, Bur Oak, Shumard Oak, Overcup Oak

TREE TYPE	CAL.	QTY	SPADE
OAK SPECIES	2-1/2"-4"	2	65"
OAK SPECIES	4"-7"	4	65"-100"
OAK SPECIES	8"-10"	7	100"
OAK SPECIES	11"-13"	2	125"
OAK SPECIES	14"-17"	4	168"

TOTAL 19



1	ARCHITECTURAL SUPPLEMENT NO. 1 Rev	MM	09/19/2023
NO.	REVISIONS	BY	DATE

MZL	MZL ASSOCIATES, INC. 8955 KATY FWY, SUITE 300 HOUSTON, TX 77024
-----	---

<b>HNTB</b>	HNTB Corporation The HNTB Companies Infrastructure Solutions Firm Registration Number 420
-------------	--

CITY OF HOUSTON	
HOUSTON PUBLIC WORKS	

NORTH PARK DRIVE	
TREE TRANSPLANT QUANTITY	
SHEET 14 of 14	

DESIGNED:	FED. RD. DIV. No.	STATE	CITY OF HOUSTON WBS	HIGHWAY No.
CHECKED:	6	TEXAS	SEE TITLE SHEET	CS
DRAWN:	STATE DISTRICT	COUNTY	CONTROL No.	SECTION No.
CHECKED:	HOU	MONTGOMERY	0912	37 232
				682